

Pānui ā kura
21.05. 2024

Ngā Hōra Tari:
Mane - Paraire
8.00am - 4.00pm
All communications via
phone, email or facebook.



Te Kura Kaupapa Māori o Whangaroa
2209 Wainui Road, Matauri Bay
R.D. 1, KAEO
Waea: 09 4050808
Waea pukoro: 0211376494
imera: tari@whangaroakkm.co.nz

Ngā whakamānawa

Te karakia Nui...
Te whare whakapakari tinana - Pakari!
Te Waka Hou... Toroa!
Te waharoa... Te Aho Matua!
Te Tohu Ki waho o Pāharakeke..koha
na te roopu tawhito o Whangaroa....



Kua whārikihia e mātou i ngā rauemi hou i tākoha mai e Te Rūnanga o Whangaroa hei hāpai te tamaiti ki tōnā ao o te akoako.

T.A.M 5.1:

Ko ngā āhuatanga ako katoa he mea mahi i roto i te koanga ngakau, me te whakaihiihi hinengaro.

Anei ngā uri a Tāne, a Māui me Tāwhaki te amorangi ki mua e mihi atu nei ki a koutou te hāpai o ki muri. Ko tāu rouou, ko tāku rourou, ki a ora ai ngā uri whakatipu.

MARARAMATAKA MĀORI / SCHOOL TERMS 2024

TERM 1 - 2024 (Term 3)
Wednesday 31 January to
Friday 12 April

TERM 2 - 2024 (Term 4)
Monday 29 April to
Thursday 5 July

TERM 3 - 2024 (Term 1)
Monday 22 July to Friday 27
September

TERM 4 - 2024 (Term 2)
Monday 14 October to
Friday 13 December

Tawhaki

Te Kura Kaupapa Māori o Whangaroa
2209 Wainui Road, Matauri Bay
R.D. 1, KAEO
Waea: 09 4050808
Waea pukoro: 0211376494
imera: tari@whangaroakm.co.nz



Tawhaki ki muri, Tawhaki ki mua, Tawhaki ki Whangaroa

Nau mai i raro i nga ahuatanga o Wehewehe 2024

Rā wawata wiki 1 & 2



Te Ira Tangata

E maha nga kaupapa i roto te akomanga o Te Ira Tangata i tenei wahanga. E haere tonu nga mahinga o te akomanga. Te Reo Matatini, Pangarau, Whakapakari Tinana, whakatau wairua, ture o te akomanga, mahi toi, pānui. Ko te kaupapa tenei wahanga ko te Puanga/Matariki. E ako ana mātou nga ingoa o ia whetu, nga waiata, karakia, nga tikanga o Puanga, me te whanaungatanga kia Whangaroa tititai. Kua timata te mahi kapa haka i tenei wiki tino hikaka, tino harikoa nga tauira, no reira e mihi ana ki a Rauaroa Heta me te whānau Heta kua taria mai o rātoū pukenga. I tēra wiki i whakanuia te rā huia o te kura.

Te Reo

Kia ora whānau, ko tēnei te wahanga tuawha mai o te tau Māori, ko te kaupapa matua i roto i te akomanga o Te Reo ko nga kahui whetu o Puanga / Matariki. A tēra wiki ka timata te whakato kia rua nga whetu ki nga tamariki, ko Waiti rāua ko Waita, nga kōrero e pā ki ēnei o nga whetu. Kua timata te aromatawai i nga tamariki, roto i nga mahi Pānui haere. Tuhinga Taki, Matauranga Tau, kia whakikōrero tuhinga mo nga purongo ka puta atu ki nga matua a te mutunga o tēnei wahanga.

Ngā whetu o te wiki



Wiki 1
Eparaima Bracken Tau 0
Awatea Samuels Tau 5



Wiki 2
Manaia Pere-Epiha Tau 6
Marino Pere-Epiha Tau 3

Ngā Kaupapa



TE AHO MATUA

Te Ira Tangata 1.6

He tapu to te wahine he tapu ano to te tane. Kia kua tetahi e whakaiti i tetahi. Engari kia whakanui tetahi i tetahi i runga i te mohio ma te mahi ngatahi a te wahine me te tane e tupu ora ai nga tamariki me te iwi hoki.

Māui

Te Kura Kaupapa Māori o Whangaroa
2209 Wainui Road, Matauri Bay
R.D. 1, KAEO
Waea: 09 4050808
Waea pukoro: 0211376494
imerā: tari@whangaroakm.co.nz



Wiki 1-2

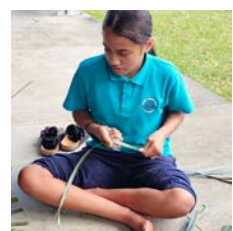
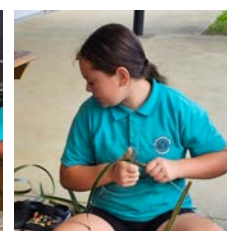
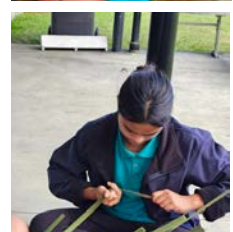
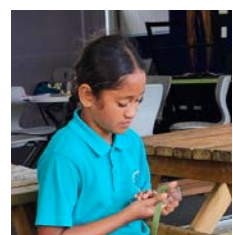
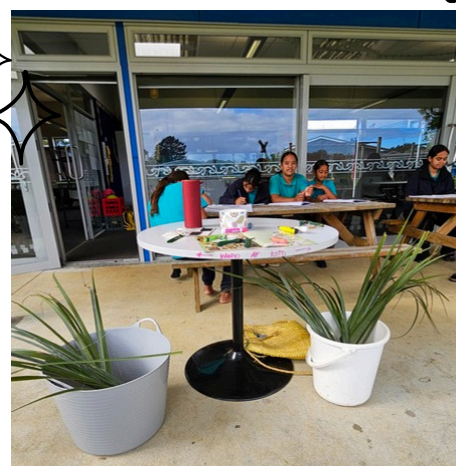
AROTAKE

Ko tino hoki tuākana ake mai ngā taurira! He nui noa ngā mahi a Māui i ēnei wiki ko pahure ake nei! Ko whārikihia ngā kaupapa ki mua i te aroaro. Ka nui te mihi atu ki ngā mātua o Māui i tae atu ki te hui whānau i waenganui i ngā hororei. Mā te nohotahi, ka tino whai kaha tō tātou kaupapa.

PĀNUI

Hurō! Ko tīmata ngā mahi ki te whare whakatupu! Me te mīharo hoki ki aua akoranga. Tirohia te whārangi pukamata mō te roanga atu. Ko tīmata hoki ki te whakakoi i ngā pūkenga rāranga! Nō te whakaaro nui o ngā taurira kia tākoha atu i ngā kono ki ngā whaea. Ko ngā hua o te whakaaro nui me te ngākau nui tēnā!

KAUPAPA



Ka pūpū ake te kohu. Ka tōtōtia e ngā taura ā Māui.
Ka whitiwhiti te āniwaniwa, ka hikitia ka puta ko Whangaroa.



Māui

Te Kura Kaupapa Māori o Whangaroa
2209 Wainui Road, Matauri Bay
R.D. 1, KAEO
Waea: 09 4050808
Waea pukoro: 0211376494
imera: tari@whangaroakm.co.nz



Wiki 3-4

AROTAKE

Haramai te kaha o ēnei uri a Tāne Māhuta rāo ko Pakotī. Inā te nui o ngā hua ko kite i te ngākau māhaki me te whai whakaaro ki ngā poutokomanawa o kāinga tahi. Ka tai pari atu ngā mihi ki ngā whaea e whāngai ana i te aroha ki ngā tamariki o Māui.

PĀNUI

Te Aho Matua o Ngā Kura Kaupapa Māori

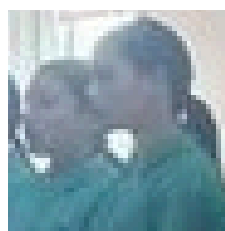
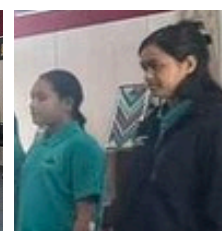
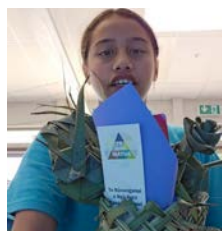
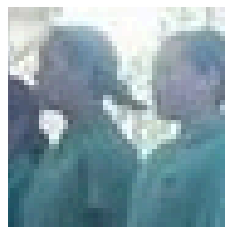
Te Ira Tangata

1.1 No nga Rangi Tuhaha te wairua o te tangata. I tona whakairatanga ka hono te wairua me te tinana o te tangata. I tera wa tonu ka tau tona mauri, tona tapu, tona wehi, tona iho matua, tona mana, tona ihi, tona whatumanawa, tona hinengaro, tona auahatanga, tona ngakau, tona pumanawa. Na ka tupu ngatahi te wairua me te tinana i roto i te kopu o te whaea, whanau noa.

KAUPAPA

Ā te wiki e heke mai ana, whakatū ai a Māui i ngā pānui ki te whare whakatupu. Taihoa ake i ngā whakaahua.

Hari Ra Mama



Ka pūpū ake te kohu. Ka tōtōtia e ngā taura ā Māui.
Ka whitiwhiti te āniwaniwa, ka hikitia ka puta ko Whangaroa.

Tāne

Te Kura Kaupapa Māori o Whangaroa
2209 Wainui Road, Matauri Bay
R.D. 1, KAEO
Waea: 09 4050808
Waea pukoro: 0211376494
imera: tari@whangaroakm.co.nz



Te Kura o Tāne - He Pānui #7

Engā mātua o te Kura o Tāne, e mihi ana ki a koutou i raro i ngā tīni āhuatanga o te wā. Ka huri.

He Tongikura

*Ki te kotahi te kākaho ka whati ki te kāpuia e kore e whati
Ko te kōrero e hāngai ana ki te ,whakakotahi i te tangata, kōtuia te here tangata ka pakari.*

*"For united we stand, divided we fall."
Brotherhood of Man*

Wharekura are completing their assessments. Research has been an important part of their learning to set goals for each marau.

Papa Taiao - Tau 11-13

A 3 Day noho wānanga from **Wednesday 29th - Friday 31 of May, 2024**. Papa Taiao will be at TKKM o Whangaroa this along with other kura participants. The papa mahi and other activities will be focused in our local area of Matauri and Te Ngaere. If you have any questions contact Whaea Meri Pera.

NCEA Tau 11-13

Noho wānanga will take place during **Week 5, Tuesday 28/5/24** focusing on completing achievement standards. The second will take place on **Week 6 Tuesday 4/6/24 - Thursday 6/6/24**, focusing on Toi Pūoro achievement standards. We want to support our taura to complete their achievement to a high standard and to move on to the next mahi.

Toi

Our taura will be attending an art exhibition at Kerikeri High - School Top Art Exhibition. Please keep an eye out on the dates. If you have any questions please contact Whaea Lorraine Still (email below).

Wāea Pūkoro

Kua aukati te mauria mai i ngā wāea pūkoro ki te kura. ALL CELLPHONES are prohibited at kura, please encourage your tamariki to leave them at home, alternatively they must surrender cellphones to kaiako or tari to be collected after kura before returning home.

IMPORTANT NOTICE

If your tamaiti/tamariki are absent from kura can you PLEASE CONTACT and notify our tari and our kaiako of their absence.

Please if you have any questions, please do not hesitate to contact me.
meri.pera@whangaroakm.co.nz or 0221096162

Ngā manaakitanga

Ngā Pouako o te Kura o Tāne

Meri Pera: meri.pera@whangaroakm.co.nz wāea: 0221096162
Lorraine Still: lorraine.still@whangaroakm.co.nz
Rewi Pene: rewi.pene@whangaroakm.co.nz, wāea: 0279195873

WĀTAKA PAHI

PICKUP

07:30
07:32
07:39
07:47
08:03
08:07
08:17
08:30
08:35
08:37
08:42

KERIKERI

Kerikeri BP
Kerikeri Homestead
Landing Rd
Kapiro Garage
Kaeo BP / Kaeo Hall
Rugby Club
Matangirau
Mahinepua
Wainui
Te Ngaere Bay
Kura

DROP OFF

4:08
4:05
3:58
3:52
3:35
3:32
3:23
3:11
3:07
3:05
3:00

PICKUP

08:00
08:30
08:35
08:40

TĀKOU

Tākou
Kura
Matauri Bay
Kura

DROP OFF

3:30
3:10
3:05
3:00

NGĀ NAMA WAEA O NGĀ KAIWHIU

Matua Cliff Beauchamp
0221916937

Matua Hoani Beverland
0224271169

Whaea Cheynie Elliot
0212092071



Tumuaki

Te Kura Kaupapa Māori o Whangaroa
2209 Wainui Road, Matauri Bay
R.D. 1, KAEO
Waea: 09 4050808
Waea pukoro: 0211376494
imera: tari@whangaroakm.co.nz



*E reo mihi tēnei ki ngā whānau I tae mai a tinana mai ki a tātou wānanga. Anei he paku aronga mā tatou hei wānanga, ka whai I te marama, te pono ka puta i te ūpoko Pakaru .
Nau mai, whakatau mai rā ki te whare kōrero e whai ake nei.*

Te Aho Matua 1.2

Tino motuhake ēnei āhuatanga katoa. Ko tēnei hoki te kākano i ruia mai i Rangiaitea. E kore ia e ngaro. Engari, ko tā ngā mātua, ko ta te whānau, ko ta te kura hoki, he mea āwhi, he mea whāngai, he mea whakaako i te tamaiti kia tupu ora ai tōna katoa i roto, i te tika me te maungarongo

- *propose that the role of the kura is all-round development of its children rather than career orientation.*
- *assert that the nurturing of body and soul in a caring environment is the greatest guarantee that children will pursue positive roles in life.*



TE AHU O TE REO KI WHANGAROA

THE COURSE IS FREE FOR
WHĀNAU OF TE KURA KAUPAPA
MĀORI O WHANGAROA.

COURSE DURATION: 17 WEEKS
WHERE: TE KURA KAUPAPA
MĀORI O WHANGAROA
START DATE: 24 JUNE - 14
OCTOBER

**FREE TE
REO
COURSE**

THIS COURSE CONSIST OF:

- ✓ 2- Hour weekly classes using Te Ataarangi
- ✓ Self directed learning
- ✓ 3 wānanga
 - 1 online
 - 2 in-person
 - Saturday - Sunday



CONTACT DETAILS



021 2553459



2209, Wainui road Matauri Bay 0478



tewhai.smith@gmail.com



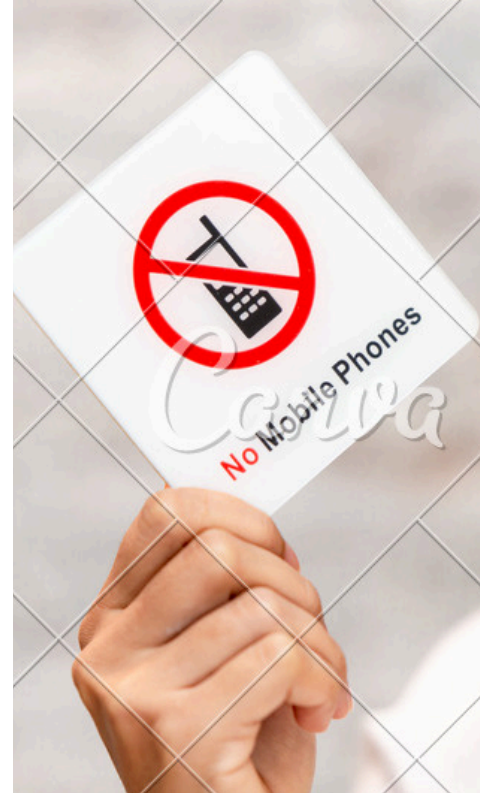
MOBILE PHONES

A new law has been passed whereby all students are prohibited from using phones at all times while they are attending school.

Provisions will be considered for the purpose to assist students in connecting with any disability or learning support needs only.

Our Tumuaki will determine that there are special circumstances to make is necessary for the student to use or access a mobile phone.

Whānau support will be appreciated and kindly respected. Ngā mihinui



KURA UNIFORM

We are experiencing our taiohi arriving to kura wearing incorrect uniform, we would like to remind for our whānau to

1. Ensure that their children have all of the uniform requirements for summer, winter and sports/traveling uniforms.

2. Our taitama wāhine in te Kura o Tāne are to wear a skirt and our taitama tane are to wear kahki shorts at all times. Sorry whānau this is not negotiable.

3. No Hoodies or label clothing

4. No Crocs footwear / Plain Black covered shoes , Sandals or Jandals only